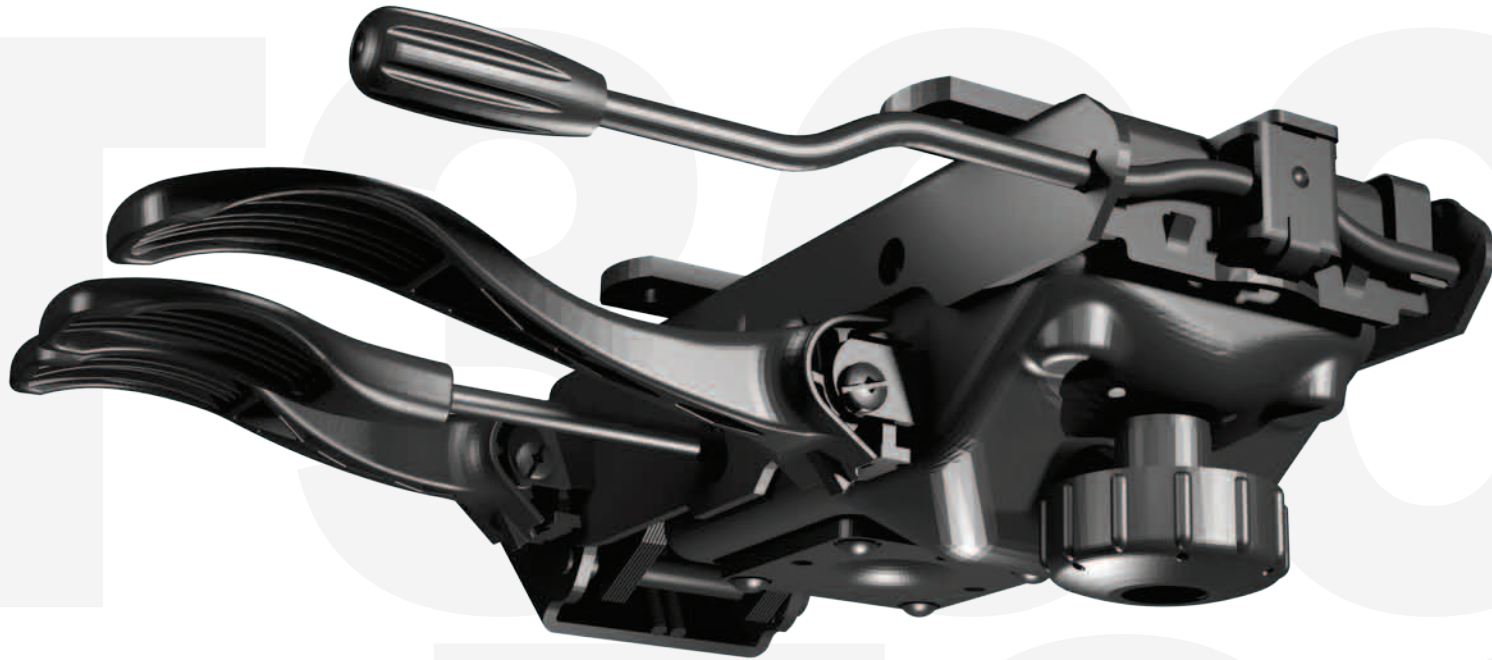
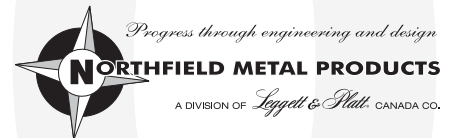


NORTHFIELD

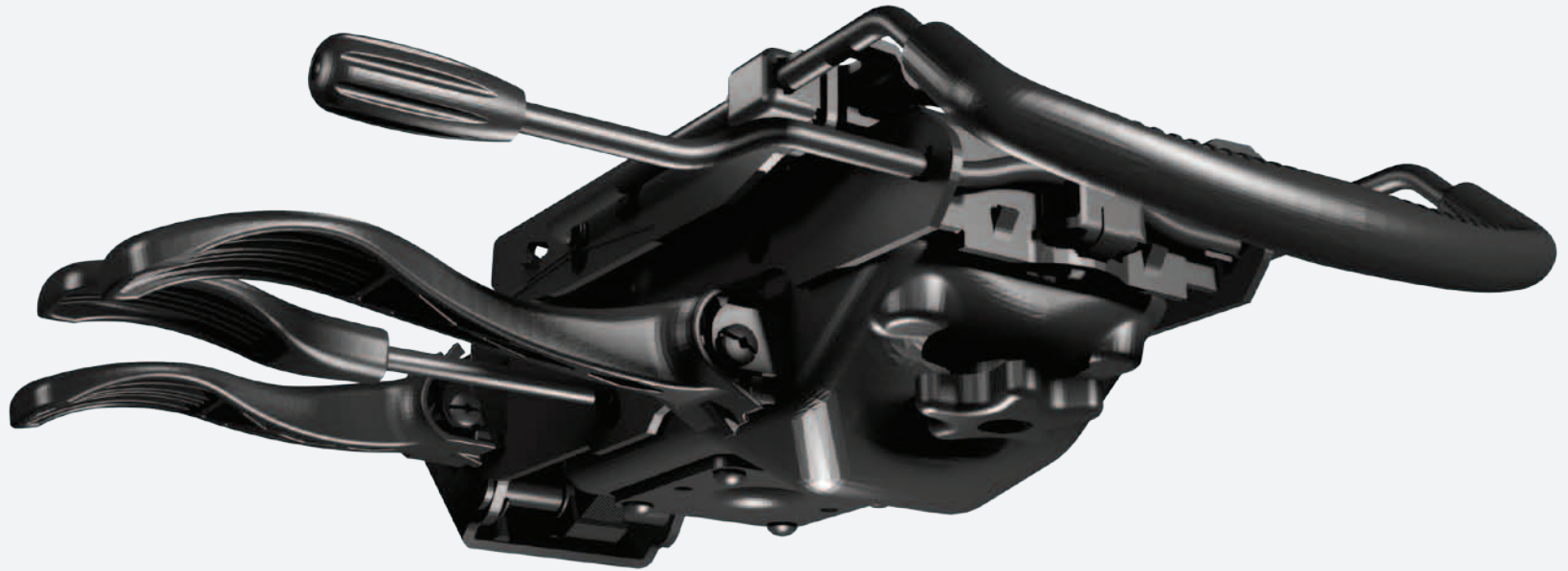
T3001 PLUS+



The T3001 Plus+ Tilter mechanism is rated and warranted for 350lb use. This mechanism has been re-engineered in order to accommodate larger seating requirements for executive chairs.



NORTHFIELD T3001 PLUS+



T3001 PLUS+

The T3001 Plus+ Tilter mechanism is rated and warranted for **350lb use**. This mechanism has been re-engineered in order to accommodate larger seating requirements for executive chairs.

Created for task seating applications with passive ergonomics in mind. Multi-Task chairs are generally specified for 'Task Specific' uses such as administrative, data processing, switchboard, and customer service applications when the tasks at hand require long periods of seated work. The T3001 Plus+ Tilter was developed with all this in mind. The mechanism can be equipped with Rotary FTS or the traditional FTS lever function.

The mechanism is equipped with Infinite Tilt Lock for independent back adjustment and a Top Activation lever for pneumatic height adjustment. T3001 Plus+ series can also be outfitted with several separate back adjustment options to complete your chair requirements.

EXTRAS & OPTIONS

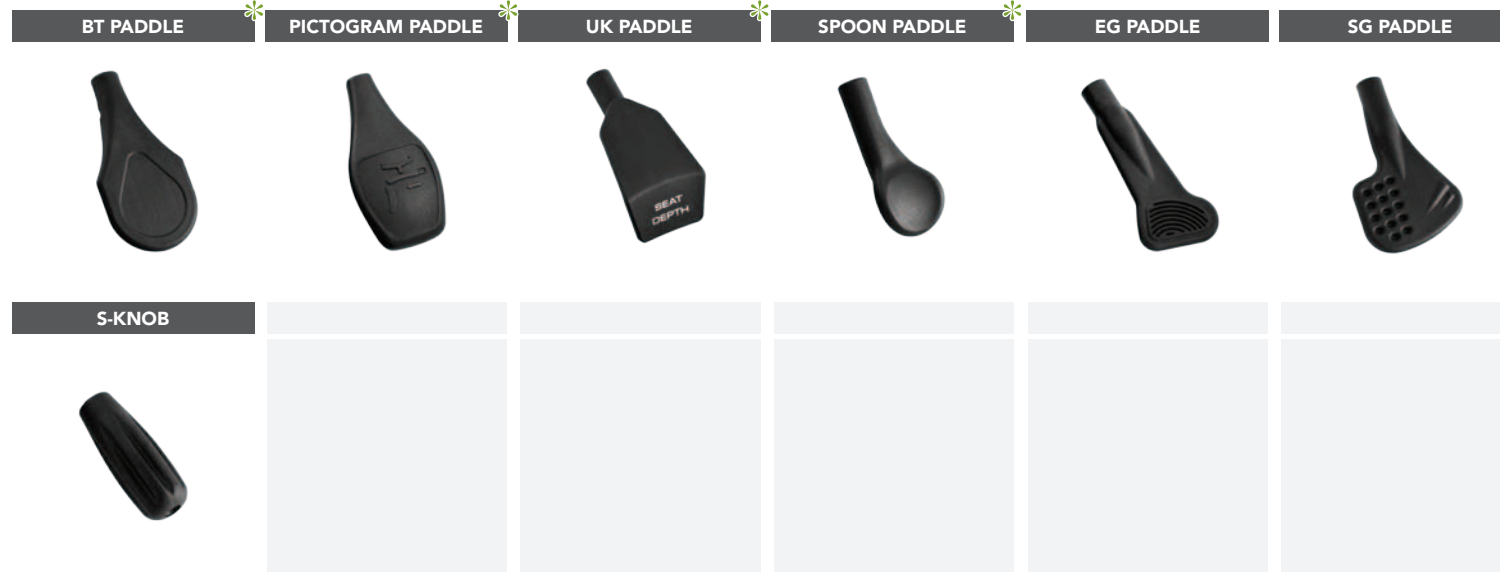
HANDWHEEL OPTIONS



SEPARATE BACK OPTIONS



CAM ACTIVATED SEAT SLIDER & 3PC LEVER OPTIONS



* 3pc lever paddle options

SPECIFICATIONS

MECHANISM FEATURES

TA – Top Activation

TL – Infinite Tilt Lock

HD – Heavy Duty Spring

Auto Seat Slider – Integrated Automotive Style and Cam Activated Seat Sliders (2.50" of travel seat slider factory installed)

BUMPERS

Standard Bumper – The standard bumper does not allow forward tilt. The mechanism stops 3 1/2 degrees rearward.

FT – Front Tilt Bumper: used when 6 3/4 degrees is required without using an extra lever.

FTS – Front Tilt Stop

Tall Rear Bumpers – These bumpers are used to reduce the seat travel by 10°, 12°, or 17°.

ARM BRACKETS

ADJ2 – Adjustable Arm Brackets

AT2 – Fixed Arm Brackets

GAS CYLINDER TAPERS

17-4E Extruded 17-4 Taper

MECHANISM ANGLES

Seat

- Forward Tilt 3.5° rearward
- Rearward Tilt 20°

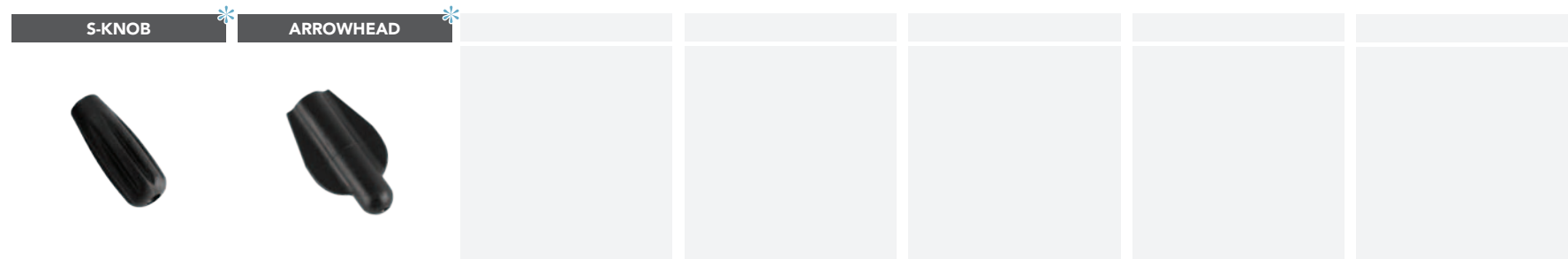
ARM BRACKET OPTIONS



SIDE TENSION OPTIONS



FTS LEVER OPTIONS



* Variable locations available by welding in different locations on the seat plate or integrated seat slider
Customer is to specify arm bracket Length and Location for the ADJ2 Welded Arm Bracket.

* FTS - Front Tilt Stop

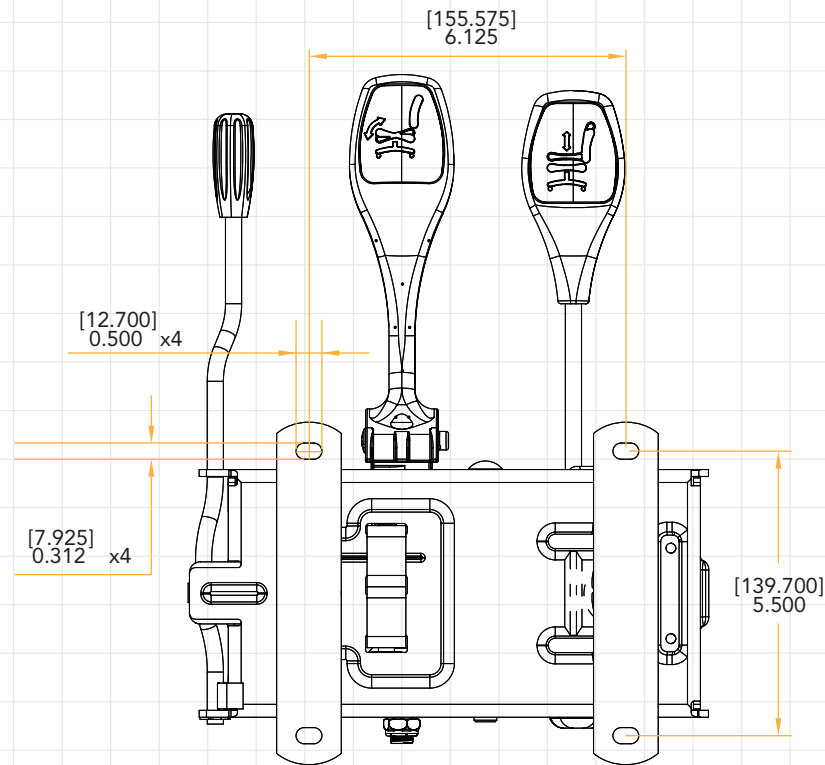
The FTS lever is located in the front of the mechanism on the right side. To operate the FTS lever twist the lever forward or rear ward. If the lever is twisted forward the FTS block will slide forward allowing the seat of the chair to tilt approximately 6.75 degrees forward. If the FTS lever is twisted rearward the FTS block will slide towards the mechanism. This will restrict the front tilt of the seat approximately 3.5 degrees rear ward.

[Note: To operate the FTS option lean slightly rearward to make the adjustments. This will allow the FTS block to move freely.]

There are two styles of levers available, standard (bent) or straight.

CAD

CROSS BAR MOUNTING VIEW

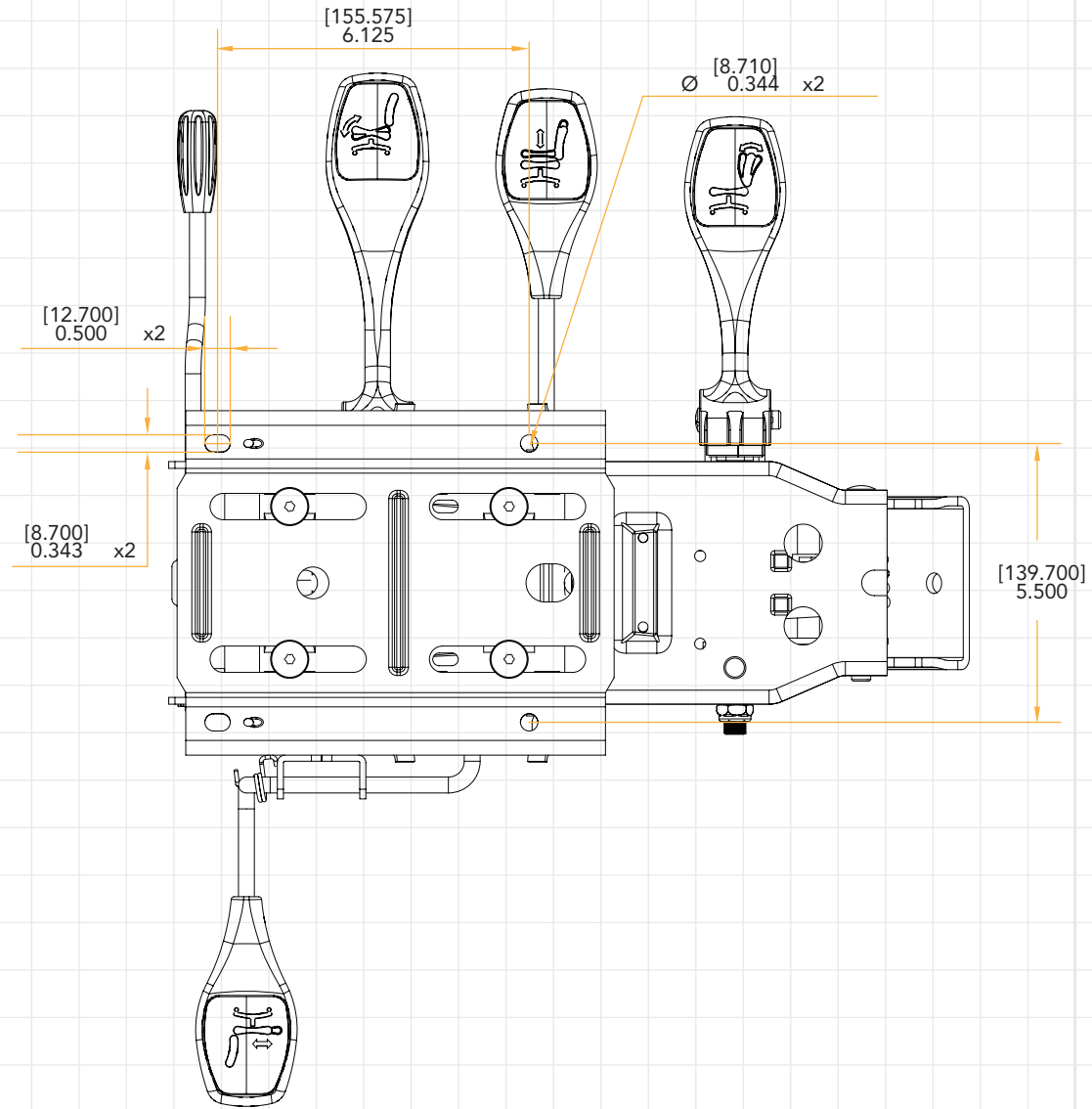


[MILLIMETRES]
INCHES

NORTHFIELD
T3001 PLUS+

CAD

INTEGRATED SEAT SLIDER MOUNTING VIEW



[MILLIMETRES]
INCHES

NOTES

Northfield Metal Products Ltd.
a division of Leggett & Platt Canada Co.
195 Bathurst Drive
Waterloo, ON N2J 3Z9 CANADA

phone: (519) 884-1860
toll-free: 1 (866) 362-9301 (Canada/USA)
toll-free: 1 (800) 362-9301 (International)
fax: (519) 884-5476
email: sales@northfieldmetal.on.ca
web: www.northfieldmetalproducts.com

BIFMA
INTERNATIONAL

Manufacturer certifies
that this product meets
or exceeds applicable
ANSI/BIFMA standards.



Progress through engineering and design

NORTHFIELD METAL PRODUCTS

A DIVISION OF *Leggett & Platt* CANADA CO.

© 2012 Northfield Metal Products Ltd. The shape of a Northfield Chair Control is a TRADE-MARK of Northfield Metal Products. The shape is your guarantee that you have purchased a genuine, high quality product made by Northfield. Northfield Metal Products Ltd. is a division of Leggett & Platt Canada Co. Printed in Canada.